



SAGA
WISDOM IN ENERGY

P R E S E N T S



MON. APRIL 11TH TO WED. APRIL 13TH
HOTEL DROVER, FORT WORTH, TEXAS

T E C H N I C A L P R O G R A M

DAY 1 – TUESDAY, APRIL 12TH, 2022

ALL TECHNICAL SESSIONS, COFFEE BREAKS AND LUNCHES ARE LOCATED IN LEGACY HALL

07:00 – 08:00

REGISTRATION AND BREAKFAST – SPONSORED BY NEUBREX

08:00 – 08:15

CHAIRPERSON'S WELCOME AND OPENING REMARKS

08:15 – 10:00

SESSION 1: COMPLETIONS ENGINEERING

Session Chairs: Trent Jacobs, SPE IPT
Steve Gornick, East Peak Resources

This session captures some of the latest learnings and developments from the field of completions engineering. Focused topics include DFIT data interpretation, casing deformation from fracturing and insights gathered from the 24-million-dollar Hydraulic Fracturing Test Site II (HFTS2) study in the Delaware Basin, which was aimed to address the billion-dollar problem of optimal development of a stacked pay resource.

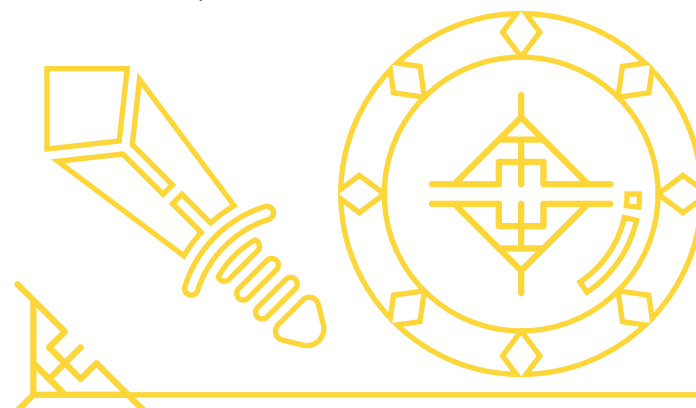
Presentation 1: Advances in DFIT Interpretation: Direct Validation from In-Situ Strain Measurements
Mark McClure, ResFrac

Presentation 2: Casing Deformation Associated with Fracturing
George King, GEK Engineering

Presentation 3: From Completion to Depletion: Key Learnings & Observations from HFTSII
Sloan Anderson, Devon

10:00 – 10:30

COFFEE BREAK – SPONSORED BY CAWLEY, GILLESPIE AND ASSOCIATES, INC.



SKKVABEKKA

10:30 – 12:00

SESSION 2: A&D AND ASSET VALUATIONS

Session Chairs: Todd Brooker, Cawley Gillespie & Associates
Conor Ross, Goldman Sachs

The table is set for an active acquisition and divestiture season in the oil and gas industry. Unfortunately, many buyers, including sophisticated evaluators, will often overpay for these assets because they overlook some key value drivers in their engineering analysis. In this session, our presenters will teach you how to navigate the data room with confidence, strengthen your decision making and optimize your portfolio.

Presentation 1: The Confident Bid Recipe – Navigating The Data Room
Franklin Stagg, Haas Engineering

Presentation 2: A Basin Centric Approach to Portfolio Optimization
David Jones, Chesapeake Energy

Presentation 3: PV25 PUD Acreage Assessment with a Machine Learning Driven Data-Centric Approach
Jon Ludwig, Novi Labs

12:00 – 13:30

LUNCH – SPECIAL PRESENTATION BY THEO VAN DER WERKEN, VP AT BIRCHCLIFF ENERGY

"Aligning a Value-Driven Strategy through Technical Excellence" –
Sponsored by Omnira

13:30 – 14:30

SESSION 3: DECARBONIZATION

Session Chair: Katherine Turk, Terminus

The petroleum industry is going through a major transformational change. The 'Decarbonization Movement' is here, and it is introducing a new set of rules, challenges, and opportunities. Global standards have been defined but are these just guidelines? Which ESG metrics matter to your operations and why? Is your company considering Carbon Capture & Sequestration (CCS) to be in the mix for achieving your financial and ESG goals? Is the drive to 'Low Carbon' influencing your strategy?

Presentation 1: Bridges and Gaps from Upstream to CCS – Technical Direction for Future Growth
Dwayne Purvis, DWAYNE PURVIS, P.E.

Presentation 2: Real Pathways to Decarbonization and Sustainable Performance
Caralyn Bennett, GLJ Ltd.

14:30 – 15:00

COFFEE BREAK – SPONSORED BY GLJ LTD

15:00 – 16:00

SESSION 4: PRODUCTION OPTIMIZATION

Session Chair: Reagan Wilkins, Sage Rider

Engineering teams are often tasked to 'optimize the base' to help their companies realize production targets, but how to achieve this is often poorly understood and inadequately addressed. Accurately predicting the onset of liquid loading or unstable flow conditions in a well can help operators optimally schedule changes in operations and maximize cash flow. The impact of flowing pressure on productivity is also a FAQ - to open or not to open the choke - that is the question. This session will provide insights on how to maximize uplift potential to help operators get the most out of their wells.

Presentation 1: Multiphase Aspects of Artificial Lift: Counter-Current Flows and Gaseous Liquid Levels
Dr. Anand Nagoo, Nagoo & Associates

Presentation 2: Automated Well Performance Diagnostics in Unconventional Reservoirs
Darryl Tompkins, Revo Testing Technologies

16:00 – 17:00

SESSION 5: FIELD DEVELOPMENT PLANNING

Session Chairs: Jennifer Bhardwaj, Whitecap Resources
Amy Studdert, Marathon Oil

Complex, geomechanics-based reservoir simulation calibrated to surveillance data, field tests and lab tests represent our industry's most rigorous physics-based approach to development planning. However, this approach is not always affordable. In this session, more practical and useful approaches to development planning are introduced, as well as workflows for handling large statistical variance in reservoir properties and well performance results.

Presentation 1: Dealing with Uncertainty in Development Planning
Jim Gouveia, Rose & Associates

Presentation 2: Integrated Upstream Planning
Matt Harriman, Pod2

17:00 – 18:30

SPECIAL EVENT & COCKTAIL RECEPTION – SPONSORED BY COMBOCURVE AND QUANTIPHI

Barn Lawn



DAY 2 – WEDNESDAY, APRIL 13TH, 2022

ALL TECHNICAL SESSIONS, COFFEE BREAKS AND LUNCHES ARE LOCATED IN LEGACY HALL

07:00 – 08:00

BREAKFAST – SPONSORED BY REVO TESTING TECHNOLOGIES

08:00 – 09:00

SESSION 6: DIGITAL ENGINEERING – DATA SCIENCE, MACHINE LEARNING & ARTIFIKIAL INTELLIGENCE

Session Chairs: Vanshaj Handoo, Quantiphi
Orkhan Samandarli, Pioneer Natural Resources

Engineers and geoscientists are now drowning in disparate sources of oilfield data. We turn to the “data scientists” in an effort to draw correlations from the noise in an effort to achieve critical insights from the esoteric mathematics of machine-learning. But what has been learned from these exercises and how do engineers prepare themselves for this new landscape.

Presentation 1: Save the Unicorns: The Rise, Fall, and Rise Again of the Digital Engineer
Derrick Turk, Terminus

Presentation 2: Making Cents (¢) of Machine Learning: Underwriting with Algorithms
David Fulford, ARM Energy

09:00 – 10:00

SESSION 7: RATE TRANSIENT ANALYSIS AND PRODUCTION MODELING

Session Chairs: Niel Beckie, S&P Global
Leigh Whittington, NextEra Energy

This session will cover some of the highlights from the world of RTA over the past year, including new approaches to interpret the impact of soak time and choke strategy on well performance, as well as introduce notable commercial advancements for complex, multiphase-flow production modeling.

Presentation 1: Evaluating the Impact of Soak Time on Well Performance in the Eagle Ford
David Anderson, SAGA Wisdom

Presentation 2: Numerical RTA in Tight Unconventionals
Mathias Carlsen, Whitson

10:00 – 10:30

COFFEE BREAK – SPONSORED BY S&P GLOBAL (FORMERLY IHS MARKIT)

11:00 – 12:00

SESSION 8: SEALED WELLBORE PRESSURE MONITORING

Session Chairs: Rebekah Shipman, Reservoir Data Systems
Dilhan Ilk, DeGolyer & MacNaughton

One of the newest and most-advanced techniques developed in the field of real-time hydraulic fracturing is sealed wellbore pressure monitoring (SWPM). This Devon Energy patented innovation, accessible exclusively through Well Data Labs, has rapidly taken the industry by storm, as it provides a low cost, practical solution for optimizing completion design.

Presentation 1: Turning a Breakthrough Technology into a Scalable Process
Mary van Domelen, Well Data Labs

Presentation 2: Sealed Well Pressure Monitoring Derivatives : What to do After the Diagnostics
Brendan Elliott, Devon Energy

Presentation 3: Sealed Wellbore Pressure Monitoring in the Montney – Early Learnings
Dan Nakaska, PETRONAS Canada

12:00 – 13:00

LUNCH – SPONSORED BY RESERVOIR DATA SYSTEMS

13:00 – 14:30

SESSION 9: INTEGRATED DIAGNOSTICS – OPERATORS’ TALES PART 1

Session Chairs: Dana Jurick, Neubrex
Tyler Rutherford, Cold Bore Technology

This session features insights from a broad spectrum of integrated reservoir studies and plays. These major operators are excited to share the lessons they learned through costly data acquisition and analysis time. Pressure monitoring and other surveillance data are investigated in an effort to optimize completion designs and well spacing decisions.

Presentation 1: Integrating Microseismic with Diagnostics & Modeling to Optimize Montney Well Design Peter Liang, NuVista Energy

Presentation 2: Applications of Integrated Diagnostics for Permian Resource Development Optimization
Somnath Mondal, Shell

Presentation 3: Measuring Completion Effectiveness and Mapping Drainage in the Bakken
Craig Cipolla, Hess



14:30 – 15:00

COFFEE BREAK – SPONSORED BY INTERFACE FLUIDICS

15:00 – 16:00

SESSION 9: INTEGRATED DIAGNOSTICS – OPERATORS’ TALES PART 2

Session Chairs: Dana Jurick, Neubrex
Tyler Rutherford, Cold Bore Technology

Presentation 4: Multi-Pronged Diagnostics to Improve Austin Chalk Development Decisions
Erich Kerr, SM-Energy

Presentation 5: Critical Subsurface Data Collection in the Permian - Where Science Meets Profit
Dave Cannon, Diamondback Energy

16:00 – 16:45

CLOSING KEYNOTE PRESENTATION BY TOM BLASINGAME, PROFESSOR AT TEXAS A&M – A FUTURE VIEW OF WELL PERFORMANCE ANALYSIS, PETROLEUM ENGINEERING AS A DISCIPLINE, AND OTHER SOMETIMES IMPORTANT MATTERS

Well Performance Analysis has evolved significantly over the last 35+ years, from simple diagnostic and analysis plots to very complex modelling and data analytics methods -- but the goal remains the same -- to understand the producing conditions of the well in terms of reservoir and completion properties. The first portion of Tom's presentation will give a light-hearted review and some perspectives on what (hopefully) comes next. For the second part, we consider the past, present, and future missions of the Petroleum Engineering discipline, as well as what we can expect in terms of technical needs and innovations, human resources, and societal impact. This segment may be more opinion than fact, but Blasingame promises to be at least entertaining, if not provocative. In closing, a few "lagniappe" items (Cajun-speak) will be shared - things to think about, to provoke thoughts and perhaps give some context to the real challenges we have in providing energy to an ever-hungry world.

Mead provided by Well Data Labs

16:45 – 17:00

FINAL REMARKS AND COCKTAIL RECEPTION

The Terrace



ACCOLADES

50 Best Places to Travel in 2021
(Travel & Leisure)

8 underrated US destinations that should be on your radar in 2021
(Oyster.com, 2021)

21 Best Places to Retire in 2021
(RetireBetterNow.com, 2021)

#2 Zoo in America (USA Today, 2021)

7 Trinity River among top 7 places to go tubing in the State of Texas
(Wide Open Country, 2020)

25 The 25 Best Places for Young Professionals (U.S. News & World Report, 2020)

1 The first music-friendly city in Texas as designated by the Texas Music Office in the Office of the Governor.

HOSPITALITY AND TOURISM

Estimated number of out-of-town visitors to Fort Worth:

9.4 million annually

Economic impact of visitors to Fort Worth:

\$2.6 billion annually

Tourism employs

\$2.6 billion annually

hospitality and tourism industry workers

Total Hotel rooms:

13,477

Total rooms downtown:

2,622

Hotel tax:

15%

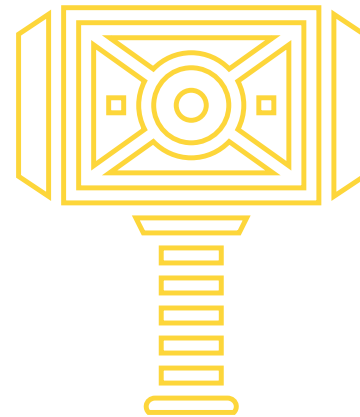
breaks down to 6% state, 9% city

Sales tax:

8.25%

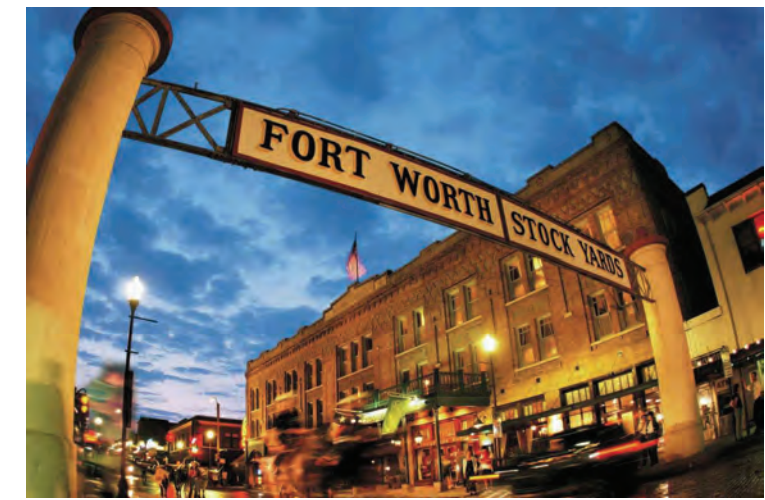
Top international visitor markets to Fort Worth include:

Mexico, Canada, UK, Australia, Germany and China.



FUN FACTS

- Stockyards National Historic District features Fort Worth's western heritage, including daily cattle drives, year-round rodeo and the world's largest honky-tonk.
- Cultural District contains five world-class museums, designed by renowned architects, in a walkable, landscaped setting.
- Vibrant, walkable downtown features Sundance Square Plaza, nightlife, Bass Performance Hall, corporate headquarters, green spaces and public art.
- Fort Worth bike share program offers more than 40 stations connecting the city's leading attractions.
- Home to contemporary western cuisine, innovative breweries and distilleries and the annual Fort Worth Food and Wine Festival.
- Home to many outdoor festivals and celebrations including Main Street Fort Worth Arts Festival, Parade of Lights, Mayfest, Rockin' the River and concerts on the banks of the Trinity River at Panther Island Pavilion.
- In 1909, the Fort Worth Zoo opened as the first zoo in Texas.
- 20 minutes from DFW International Airport and AT&T Stadium.
- Home to TCU, a national university and member of Big 12 Conference
- 60 percent of America's paper money is printed at the U.S. Bureau of Engraving and Printing Western Currency Facility in Fort Worth (tours are available). It is the only facility outside of Washington D.C.
- Fort Worth's Texas Motor Speedway is one of the largest racing facilities in the nation, with seating for nearly 155,000 spectators. It's home to the largest High-definition screen in the world (Big Hoss TV).
- Fort Worth ranks high in the Human Rights Campaign's Municipal Equality Index (MEI), which demonstrates the ways that many cities support the LGBT people who live and work there. With a score of 100, Fort Worth ranks among the highest in the state of Texas.
- Fort Worth was one of the first major cities in Texas to establish a human rights commission, in 1967. In 2009 non-discrimination protection was extended to include sexual orientation, transgender, gender expression and gender identity.



SAGA WISDOM KKVABEKKA

PLEASE JOIN SAGA WISDOM IN THANKING THESE SPONSORS!



1600, 736 6th Ave SW
Calgary, Alberta, T2P 3T7
CANADA



Darcy Fairbrother,
Sales
403.809.1316



John Thompson, Business
Development
403.542.5393



WEB
www.sagawisdom.com
info@sagawisdom.com